



Nebraska Society News

Soil and Water Conservation Society

November 1999 Newsletter

Officers 1999-2000

President	S. Corey Brubaker	402-441-6753
Vice President	Jerry Baysinger	
Secretary	Kris Reed	402-471-3946
Treasurer	Dave Langemeier	402-486-1361

<http://incolor.inetnebr.com/dougg/swcs/>

From the President's Desk

Greetings! After trying for nearly four months to find someone to lead our chapter into the new millennium, I volunteered to serve as President. As a newly elected member of the Board of Directors I agreed to contact potential candidates for President, Vice-President and Secretary following our meeting in June. Although I didn't pursue the task as vigorously or expeditiously as I should have, I was disappointed that none of the candidates we had identified at the board meeting, as well as those we identified later via conference call, were willing to serve as president. While I understand their reasons for not wanting to take the added responsibility it was still very discouraging. Fortunately, I had much better luck in finding a Vice-President in Jerry Baysinger and I appreciate Kris Reed's willingness to serve as Secretary and Dave Langemeier's willingness to continue to serve as Treasurer. It would seem that one of the greatest challenges facing our chapter is finding ways to encourage our members to become more active and identifying members who want to serve in leadership roles.

One of my primary goals as President is to identify those individuals who are willing to serve as leaders in our chapter and to have next year's officers identified prior to our annual meeting. To this end, I plan to meet with members of the Board of Directors, the nominating committee and others sometime in November to review the By-Laws and begin the process of identifying candidates for next year.

My second goal is to identify ways to increase member involvement in chapter activities. To that end, I would very much like your input as to the types of programs and activities you would be interested in. You can contact me via e-mail at sbrubaker1@unl.edu or via telephone at (402)-441-6753. The only programs that are currently planned are the Annual Meeting and the Legislative Breakfast.

I look forward to serving as your President for what remains of the 1999-2000 term. With your help I believe we can make the Nebraska Chapter of the Soil and Water Conservation Society a relevant and viable organization.

S.Corey Brubaker

"Nebraska The Good Life"

I have lived in Nebraska for twenty-five years and have heard the phrase "Nebraska The Good Life" many times. Nebraskans have always been proud of what we are doing. Knowing that, I expected to see that showing at the National SWCS meeting in Biloxi, Mississippi. Nebraska had oral presentations made by Maggie Smith, Larry Warneking and Steve Moran and poster presentations by Darla Juhl and Gary Muckel.

The presentations were well done and they shared, with the attendees, what unique accomplishments that Nebraskan's were doing. These presentations were given during concurrent sessions and had the opportunity to be heard by many of the, over 700 professionals in attendance.

Darla's and Gary's poster were on display in the ballroom and were able to be viewed by all the attendees and their spouses. There were many good posters and it has given me new and different ideas that we may use in Nebraska. Unfortunately, we had only two of the 69 posters. This was a lost opportunity for Nebraska members to show "Nebraska The Good Life".

The next annual SWCS meeting "**Gateway to the Future - Conserving Private Land**" is scheduled for July 8-12, 2000 in St Louis, Missouri. With the annual meeting being so close to Nebraska, it is an opportunity to show them "Nebraska The Good Life". Abstracts for presentations and posters presentations are now being accepted. Deadline for abstract submission is November 19, 1999. Information on requirements for posters and presentations can be found at <http://www.swcs.org/CONFERENCES/2000conf.htm>.

I challenge everyone to get involved and show them "Nebraska The Good Life".

Harold Klaege

The paddle fish, from the Mississippi Riverine System, has remained unchanged over time. It is one of the oldest creatures living on earth.

NEBRASKA 2000 SWCS Annual Meeting, June 14-17

It's November, and not to soon to be thinking about the upcoming 2000 meeting at Ft. Robinson in Crawford, Nebraska. Mark your calendars for June 14-17, 2000. You may notice that the meeting is a little longer this year. This is because of the distance many of you will be traveling. The committee thought that once you were here - you might like to stay awhile in God's country (A little western Nebraska humor).

We believe that we have a full and enjoyable meeting planned this year. The theme of this year's meeting is Cultural Resources. There will be plenty of fun, exciting, and educational opportunities for the whole family.

Accommodations have been made for Comanche Hall (*refer to the layout on page 3*). This building has a complete kitchen and will sleep 60 people. Rooms will accommodate up to 5 people. There are 14 individual bathrooms, so facilities will need to be shared (the doors lock). Towels and linens are furnished.

Campground facilities include both modern and primitive areas. The modern grounds include: shower house, flush toilets, water pumps, dump station, grills and picnic tables. Rates for modern area is \$10.00/night and primitive area is \$7.00/night. No reservations are accepted for campgrounds. A valid (2000) NE Park Entry Permit is required for all vehicles that come to the park.

There are two motels in Crawford: The Hilltop Motel (800 504-1444 or 1-308-665-1144). Current rates are \$39.00/night for single and \$49.00/night for double. The Town Line Motel (800-903-1450 or 308-665-1450 or FAX 308-665-1629). Current rates are \$34.00/\$44.00/\$50.00 for 1-2-3 bedrooms. Kitchettes are an additional \$6.00 and only available in 2 and 3 bedrooms. Chadron is 25 miles east (35 minute drive) also has lodging available.

Ft. Rob is a very popular State Park. If you plan on staying at Comanche Hall, call Stephanie King at 308 327-2141 X108, so you can be put on the list. If you plan on staying elsewhere, you will be responsible for your own accommodations. Since all reservations are processed on a first-come, first-serve basis, I suggest you do so immediately. Reservations for other Ft. Robinson facilities are accepted between 8a.m. and 5 p.m. (MT) daily by calling 308-665-2990 or FAX 308-665-2909.

Tentative Agenda NE SWCS 2000 Annual Meeting

Wednesday, June 14th

Registration 3-5pm
Barbecue/Awards 5-6:30pm
Biocontrol program 6:30-7:30pm
Board Meeting 7:30-9:00pm
Star Gazing Party 9:00pm

Thursday June 15th

History of Fort Robinson with Tour 8-10am
Kids program 8-10am
Travel to Agate Fossil Beds 10:30-3:30
History of Surveying 4-5pm
Kids program 3:30-5pm
Post Playhouse

Friday June 16th

Prehistoric Prairie Discovery Center 8-9am
Tour Hudson Meng Mammoth site
Special lunch stop
Tour Toadstool Park
(Flintknapping demo)
Chuckwagon Cookout

Saturday, June 17th

Business Meeting 8-10am
(includes breakfast bar)
Wrap-up Board Meeting 10-11am

LAPEL PINS

A new supply of Nebraska Chapter SWCS lapel pins has been received. The Nebraska Chapter decided at the 1999 Annual Meeting to order an additional 100 pins. Two hundred of these have been sold in the past few years. The pins sell for \$5.00 each. They make good gifts and at the same time serve as a fund raiser for the Chapter. The pins are available from David Langemeier.

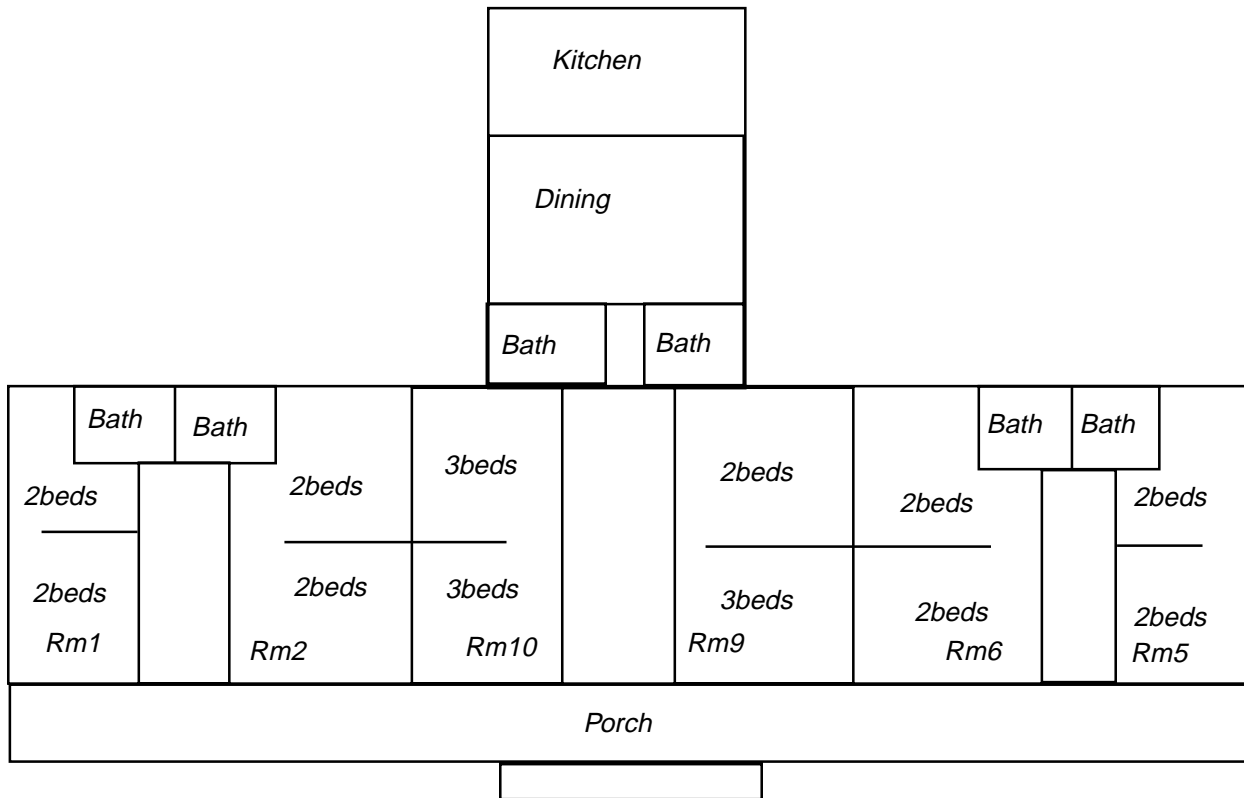
The International Meeting of SWCS 2000 will be in St. Louis, MO. The "Show Me Chapter" will co-host the meeting with the Illinois Chapter on July 8-12, 2000.

Foundation News

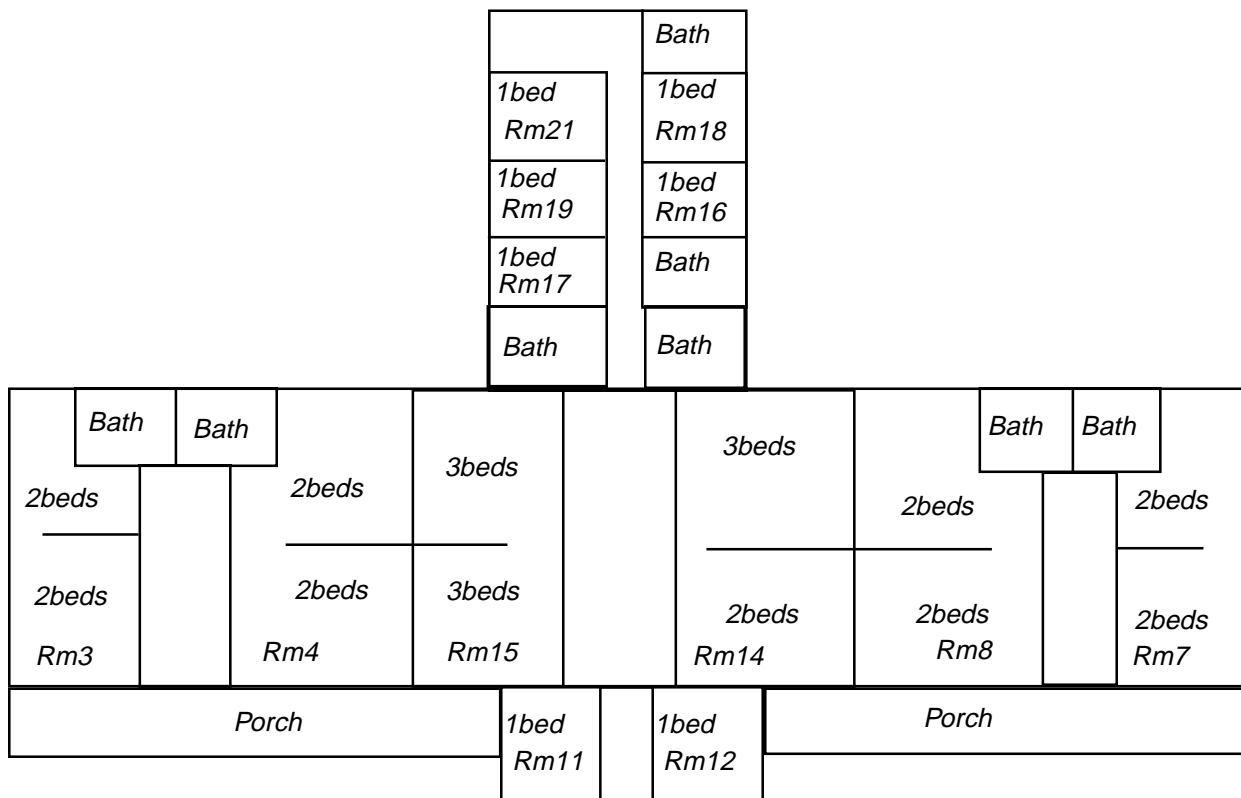
The University of Nebraska Foundation - Nebraska SWCS endowment fund was established in 1973 to provide a mechanism for providing scholarships to college students interested in the natural resources field. The fund balance as of May 31, 1999 was \$ 10,390.53. \$9,318.01 of this is principal and \$1,072.52 is income that is available for scholarships. For the past several years, we have been able to fund two \$500 scholarships. Encourage college students you know to apply for these University of Nebraska scholarships. Please contact David Langemeier if you have any questions.

Question is, do you mind sharing a bathroom with fellow SWCS members? To lower lodging cost, Comanche Hall has been reserved which sleeps 60 people plus has a kitchen. That amounts to \$30 per person for 3 nights (\$10 per night), WOW! Please let Stephanie King know your preference on lodging so she can inform others who stay at Comanche what their lodging cost will be if less than 60 stay at the lodge. Stephanie can be reached at: stephanie.king@ne.usda.gov, 308-327-2141 (W).

Comanche Hall - 1st Floor



Comanche Hall - 2nd Floor



Interest in Nebraska Buffer Strip Program High

As of September 1, 1999, over 480 applications encompassing 450 miles of buffer strips were approved by the Nebraska Department of Agriculture (NDA, see map). The Nebraska Buffer Strip Program (BSP) was designed as an incentive for implementing filter strips and/or riparian buffer strips as part of the State's effort in protecting water resources from agricultural pesticides. Filter strips are vegetated strips of stiff-stemmed grasses located along perennial or intermittent streams, or permanent water bodies. These strips are between 20 and 100 feet wide. Riparian buffer strips have trees and/or shrubs in addition to the grasses, and can be up to 150 feet wide. These strips filter sediments, nutrients, and pesticides from runoff water, and are also beneficial to many wildlife species. Through the program, landowners are eligible to receive payment in five to ten year contracts of up to \$150/acre annually, depending on land use, soil type, and participation in similar programs.

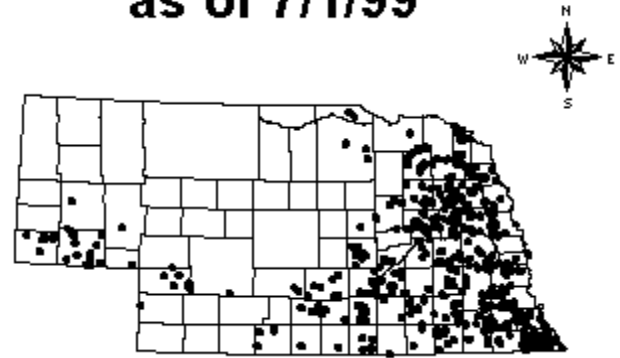
The program is administered cooperatively between Nebraska's 23 Natural Resources Districts and the NDA. Technical assistance for designing and installing the practices is provided by the USDA Natural Resources Conservation Service (NRCS). Funding for the program comes from pesticide registration fees for pesticides being sold, distributed, or applied within the state.

The BSP was designed to compliment existing programs, primarily the Conservation Reserve Program's (CRP) continuous sign-up for similar practices. This program is administered by the USDA Farm Service Agency with NRCS providing technical assistance for installing the practices. The continuous sign-up was started in 1996; and buffers established after this time are also eligible for the BSP.

Applications were received from 20 of the state's 23 Natural Resources Districts; 60 counties were represented. Approved buffers totaled 4,500 acres. Approximately 69% of the total were acres which will be planted in 1999. Thirty-five percent of these "new" acres were enrolled in the BSP alone, indicating that the program offered advantages over the CRP for some applicants. The remaining acres consist of existing buffers planted after January 1, 1996, as allowed by the program. Riparian buffer strips will be planted on 230 acres statewide.

Irrigated acres totaled 1,205. This land-use was one of the main targets of the program because of the lack of participation by irrigated landowners in the

Buffer Strip Distribution as of 7/1/99



CRP. These acres also have a high potential for nonpoint source pollution from agricultural pesticides because of the added potential for runoff and because they are often located in valleys adjacent to streams. Approximately 90 percent of the irrigated acres enrolled in the BSP are new acres to be planted this year; approximately 56% of the total are enrolled solely in the BSP.

As of this writing, approximately \$193,000 have been obligated annually for the approved applications. Approximately \$122,000 of this amount has been distributed to NRDs for approved contracts in fiscal year 1999. The rental rate from all programs involved averaged \$125 per acre. For irrigated cropland, the rental rate from all programs averaged \$137 per acre, ranging from a low of \$88 per acre to the maximum of \$150 per acre. The rental rate for the BSP portion alone averaged \$45 per acre, ranging from a low of \$5 per acre for dryland cropland in conjunction with the CRP to \$150 per acre for irrigated cropland using the BSP alone. Total obligations to fulfill the five to ten year contracts equal \$1,843,000.

The Nebraska Pesticide Board was created by the Buffer Strip Act to review the program and advise and make recommendations to the NDA regarding its administration. This board is to meet at least once annually, and is comprised of members representing the pesticide industry, agricultural producers, the University of Nebraska Institute of Agriculture and Natural Resources, environmental interests, and municipalities.

Funds are still available for this year. Anyone interested in the program should contact their local Natural Resources District or NRCS office, or the Lincoln NDA office. Applications can be submitted at any time, however producers should work with these local offices to plan for the proper planting time.

Excerpts From 1999 Annual Meeting Minutes - June 18

In the absence of Vice President, Edwin O. Harms, a presentation was made by Norm Helzer and Anita Nein for the new gavel made by Ed. The gavel is made from native walnut.

There was great participation by the student chapter this year. The Student Chapter President discussed and advertised T-Shirt sales.

Paul Smith gave a brief overview of the Foundation's activities. The SWCS Foundation has been given the opportunity of being donated a working farm. There are still some legal ramifications, so the deal is not yet completed.

Gus Hiughbanks nominated and Dave Langemeier seconded that Darla Juhl be the 1999 delegate to the 54th annual meeting in Biloxi, Mississippi. Motion carried by unanimous vote.

Blue-Nemaha Section was asked to host the 2001 annual meeting. Wally Valasek will get back to the officers on this.

The NE SWCS and Northeast Chapter's recognized John Doran and the committee members: Bill Powers; Brain Weinhold; Gary Varvel and Kris Reed for organizing an extremely well run annual meeting in Lincoln. The facilities and subject matter were top notch and timely. Our appreciation was given through a round of applause thanking and honoring the committee's hard work.



1999 SWCS Award Winners, left to right: Commendation Award, James Harder, Darla Juhl, Michael Lance (not pictured, Stephanie King and Phillip Rickey). Honor Award, Richard Gray. Merit Award, Santee Sioux Tribe of Nebraska, Sam Kitto, Wetlands Coordinator.



Members discuss their observations during one of the tours at the 1999 Nebraska SWCS Annual Meeting.



Don King, Brett Koenen and Steve Nein on Panhandle Ski Trip to Laramie Wyoming. Number attending was up. Bad weather, but all had a good time.

Workshop Held

The SWCS Nebraska Chapter was a co-sponsor of the Biotechnical Streambank Protection Measures Workshop. This two-day workshop was held in March at the Arbor Day Farm/Lied Conference Center in Nebraska City. Biotechnical streambank protection involves the use of live tree and shrub cuttings to stabilize streambanks. The workshop involved classroom presentations on planning and designing protection measures and field experience installing the techniques. The USDA National Agroforestry Center was the main sponsor of the workshop.

3rd Annual NE Chapter SWCS Golf Tourney

The third annual Nebraska Chapter SWCS Golf Tourney was held on September 3, 1999 at Whitetail Run Golf Course near Fremont. Thirteen golfers participated. A two-person team, best ball format was used. Winners were: 1st - Bob Rathjen and Roland Langemeier; 2nd - Keith Plummer and David Langemeier; and 3rd - Don Vrana and Tony Vrana. Flag prizes were given for all 18 holes plus special prizes for various events. SWCS memberships were won by Dana Snyder and Don Vrana. Donations were received from Lyle Steffen, Norm Helzer and the Lower Platte North NRD for the two SWCS memberships.

Prizes were donated by Jerry Baysinger of Pioneer Hi-Bred International, Budweiser D & D Distributors, Nebraska Book Store, The Groundwater Foundation, Williamson Honda, Shell Oil Co., Pfizer Inc., NARD, State Farm, Bagels and Joe, and Nebraska Corn Growers Association, Diers Ford, SWCS, Whitetail Run Golf Course, Radcliffe and Associates, Lower Platte South NRD and Lower Platte North NRD.

David Langemeier welcomes comments on the timing, location and format for the year 2000 Fourth Annual golf event.

NE Soil and Water Foundation News

The Nebraska SWC Foundation has announced a new Individual Levels of Giving Campaign in order to continue and expand their programs. The drive was announced by President Norman P. Helzer of Lincoln at the annual meeting held this past summer. "It is an investment in conservation for Nebraska's renewable natural resources," he said. "With your support our foundation can grow," he added.

The Foundation was created in 1988 to provide financial support for the mission of the SWCS in Nebraska. Their purpose is to promote and support special activities in education, public information, and research.

Support of the foundation can be accomplished in several ways such as cash contributions, memorials, honorariums, will designations, and life insurance beneficiaries. The foundation has 501 (c)(3) tax exempt status for its donations. They can accept land, stocks, bonds, and other tax advantaged gifts.

The Foundation does the following:

- scholarships for college students
- educational and research support
- support of worthy natural resource projects
- donates to youth projects
- award programs
- assists with projects of the membership and local activities.

"Higher levels of giving will be recognized and awarded accordingly," stated President Helzer. "We are looking forward to a successful campaign," he said.

For further details contact the foundation office at 1319 Eastridge Drive, Lincoln, NE 68510.